



DB Export/Import/Generate data tool

Main functions:

- quick connection to any database using defined UDL files
- show list of available tables and/or queries
- show data from selected table with possibility to sort, filter, export, print
- universal **export dialog** to XLS, SLK, TXT
- universal **Import data wizard** which can import data from any source, define link between source and destination field and import or update data
- universal **Data generation wizard** which can generate random data or data according prepared lists in demodata.mdb database
- universal tool to generate INSERT or UPDATE **sql script file**
- dialog to generate and run SQL command
- show database schemes results

How to use it

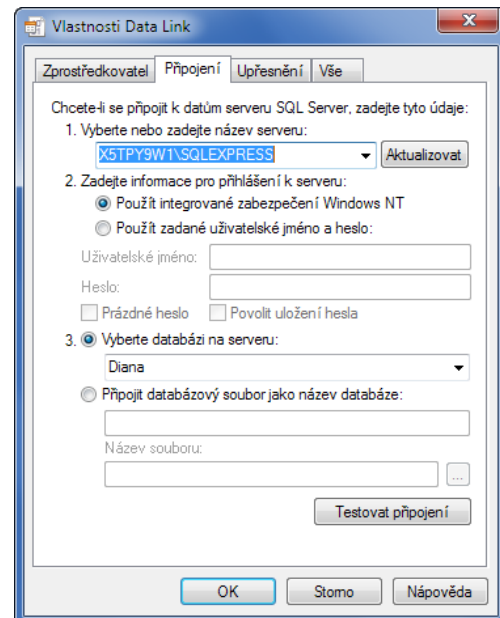
Connect to database

Click to Create new connection, enter connection name and new UDL file will be created and opened for modification, set all connection parameters and close.

Click to Connect, list of tables will be shown.

Next time only select connection file and click to Connect.

Existing connection can be Modified or Duplicated.



Show and export data

Connect to database, select Table/View name and data will be shown. For very big table number of rows can be limited to selected thousand by TOP records number.

Opened data can be sorted, filtered and exported by toolbar:



Import data

Select table and show current data.

Click to [Import data](#), Import wizard is shown

Step1 – select source

Select data to import – select file (XLS, XLSX, MDB, DBF, CSV, TXT) or create new connection for import from SQL database.

Select Table name (sheet name for XLS) with data to import

Step2 – field selection, type of import

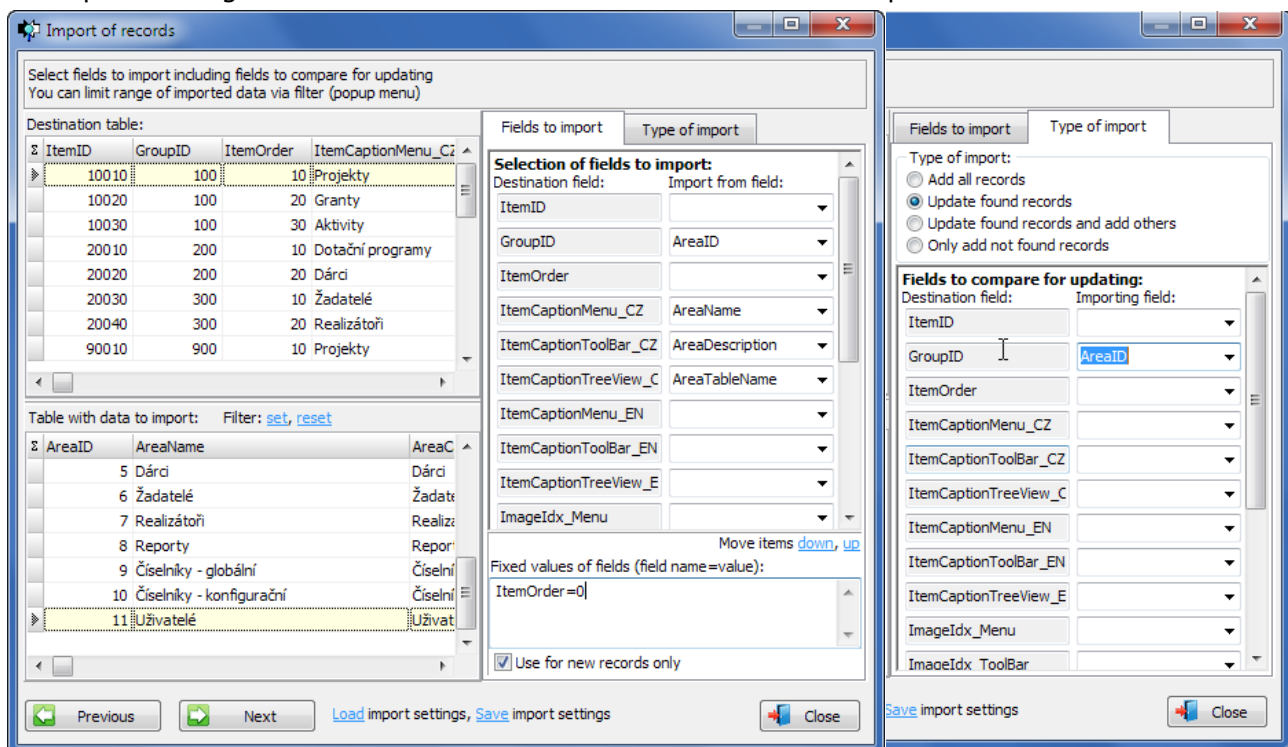
List of current data and data to import is shown, optionally use filter to limit amount of data to import.

Enter fields to import – fields with same name is linked automatically, other can be linked manually.

For some fields fixed value can be defined.

In page [Type of import](#) define way of import, for update type define key fields to join source and imported data.

All import settings can be saved and later loaded for the same import in the future.



Step3 – import

Expected number of imported records is shown and click to [Run import](#) if everything is ok.

Final report is shown when import finished.

Generate data

Select table and show current data.

Click to [Generate data](#), dialog with list of fields is shown

For each field select needed **Action**:

- none – field is not changed or set
- constant value – enter any value for the field
- increment from – enter start numeric value
- random (min..max) – enter minimum and maximum, eg. 100..1000
- random from demo db – enter table name and field name from demo database
- next rec from demo db - enter table name and field name from demo database
- random from own db – enter table name and field name from connected database
- next rec from own db – enter table name and field name from connected database

Action **random/next rec from demo db** is usefull for inserting list of names, emails, towns etc from demo database. See database structure and content to see or modify data details.

Action **random/next rec from own db** is usefull for inserting existing values from any connected table to make Master-Detail relationship.

All settings can be stored and loaded next time.

Select generation type – **Update** all (filtered) records or **Insert** new records.

Click to [Generate data](#)

Target table: **Sale_InvoiceItems**

Field Name	Field Type	Action	Value / Min..Max	Table Name	Field Name
InvoiceItemID	Int				
InvoiceID	Int	random from own db		Sale_Invoices	InvoiceID
ContractItemID	Int				
ItemSort	Int	random (min..max)	1..1000		
ItemNumber	Int	increment from	1		
ItemType	String	constant value	Article		
ItemCode	String				
ItemName	String	random from demo db		Surnames	Surname
ItemDescription	Blob	random from demo db		Emails	Email
ArticleID	Int				
UnitsCount	Num	random (min..max)	1..10		
UnitID	Int	constant value	1		
UnitPrice	Num	random (min..max)	100..20000		
DiscountPercent	Num	random (min..max)	0..25		
Price	Num				
VATPercent	Num	constant value	9		
Note	Blob				
Format	String				
ImportID	Int				
ProformaInvoiceID	Int				
GroupDiscount	Num				

AutoLoad settings

Generation type
 Update existing records
 Insert new records
 Number of records:

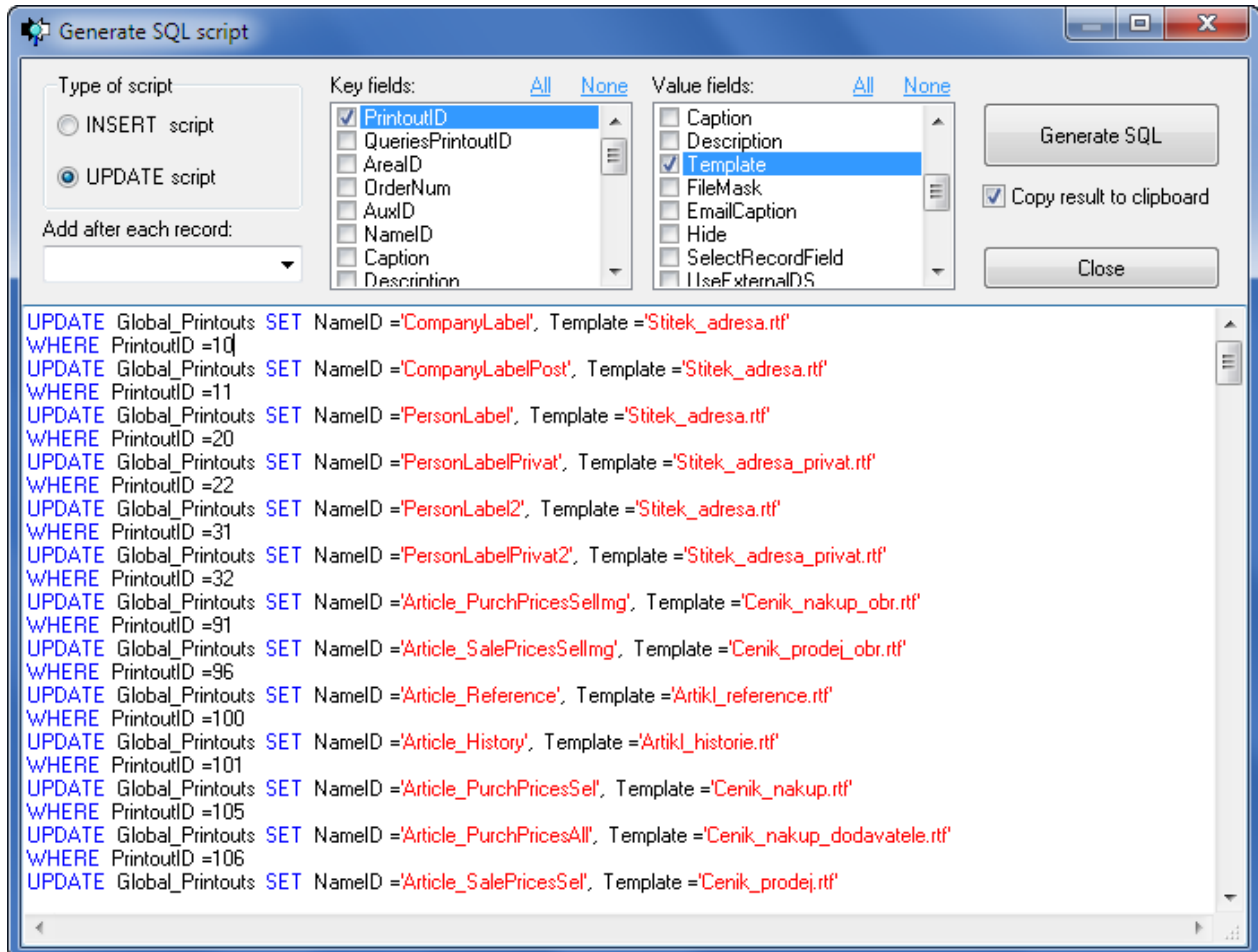
Generate SQL script

Select table and show data, use filter to select data to generate script.

Click to [Generate SQL script](#)

Select type of script. For UPDATE script select list of Key fields (used in WHERE parts) and select list of updated fields (used in SET parts).

Click to [Generate SQL](#)



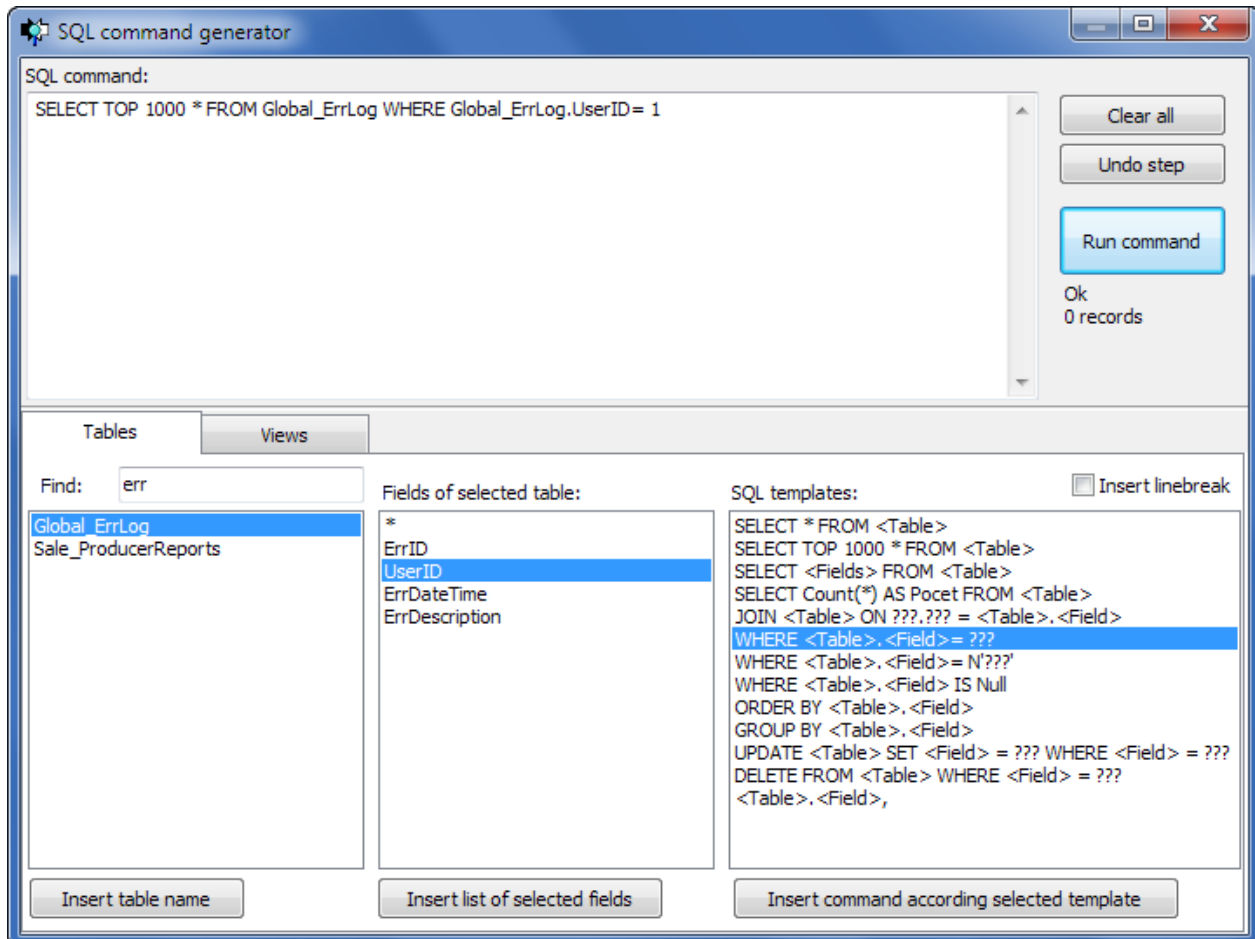
Generate and Run SQL command

Select table and show data, use filter to select data to generate script.

Click to [Run SQL command](#)

Generate any SQL command, optionally use list of tables and prepared templates.

Click to [Run command](#) to open or modify data



Show database info schema

Select [Show info scheme](#) page and select schema name (some schemes is not supported for some databases). Result of scheme is shown and can be exported in same way as data.

Author:

[Rosinsky Software](#)